

1

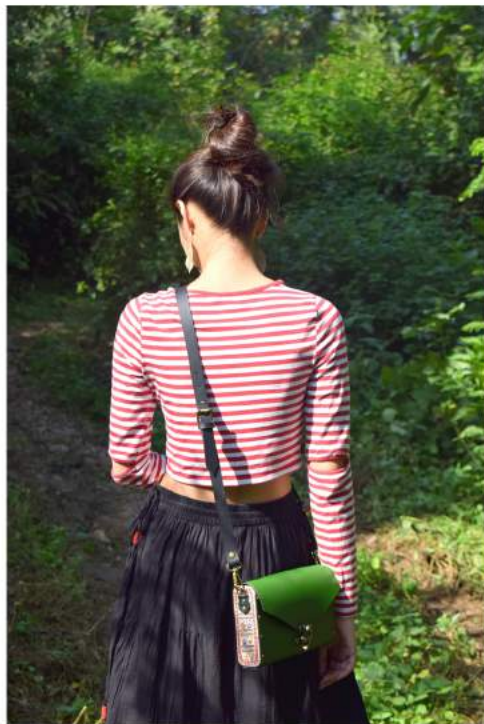
SWARANG
DESIGNS





Inspired by Madhubani art, the Mithali collection combines the finest quality of leather with hand painted and handcrafted designs to create a one-of-a-kind work of art.

From laptop sleeves to sling bags we bring to you a collection that complements your lifestyle. It's a collection that seamlessly combines an old world charm with modern silhouettes.



Wood and finest quality of leather combined to give you our classic harness sling bag.



Our handheld envelop clutch is an elegant design with a touch of sophistication.



Adorned with Madhubani, the harness sling bag is perfected by our artist's subtle touch.

Our black hexagonal sling bag is for those who have an eye for detail.



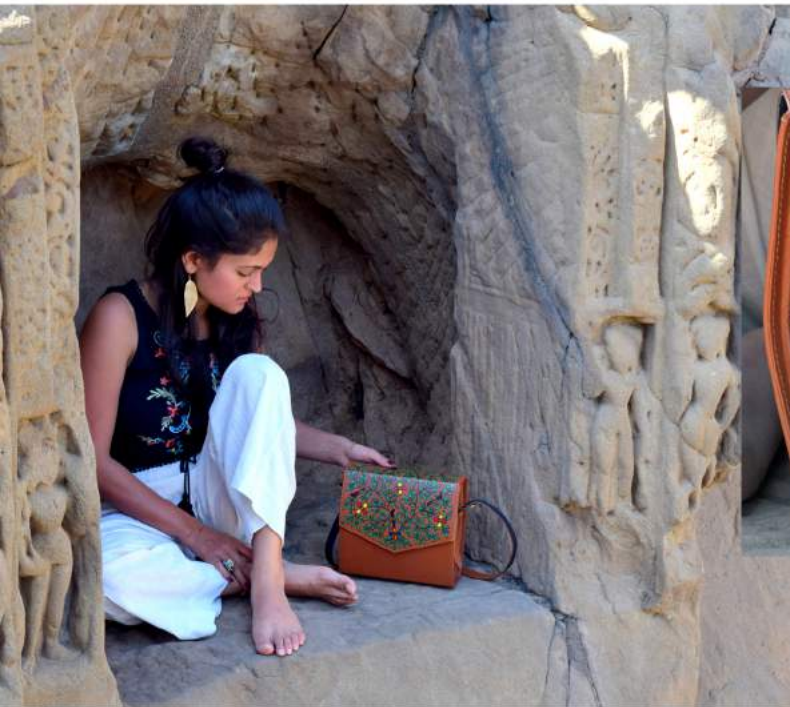
With minimal cuts
our harness sling bag
has been crafted to complement
your every outfit.



From a long to a short sling, our classic sling bag
offers you a range of different styling options.



Our contemporary handheld envelop clutch is designed to fit all your evening essentials, perfect for every soiree.



Pure leather has been transformed into a canvas for Madhubani art. With our tan hexagonal sling bag you will never fall short of space.

Made of a single sheet of leather with adequate cushioning inside; this sleeve is perfect for your technological marvel.



With a built-in notebook holder, pen and card slot, the dhol laptop sleeve ensures you're always prepared for an impromptu meeting.

Leather and canvas comes together to form the black backpack.
A piece that beckons you to step out and rediscover the world.





Our tool box harness sling bag is made with the finest leather and hand painted by our skilled Madhubani artisans. The unique shape of the bag ensures enough space for all your belongings and is available in different colors.





Reach Us at :

SWARANG
DESIGNS

✉ info@swarangdesigns.com

🌐 www.swarangdesigns.com

f www.facebook.com/swarangdesigns

📷 @swarangdesigns

☎ 9811027095

5/7 , Kirti Nagar
Industrial Area , New Delhi

1	1	0	0	1	5
---	---	---	---	---	---